

AccuPrep MPS™ for GPC Cleanup

Key Features

- Septum Piercing
- Probe Tracking
- Solvent Level Sensor
- UPS Power Watchdog
- Uses Disposable, Sealable Sample Vials
- Flow-rate calibration
- Bypass or 5-Column Selector Valve
- Column Heater Control
- Automated Solvent Switching
- Solvent Flow Ramping
- Multiple Injections

Software Features

- Windows-based PC software
- Use desktop or on-board PC
- Priority Sample
- Programmable solvent addition for vial rinsing
- CLP-Driven Reports
- Sample Reports
- Calibration Reports
- Sequence Reports
- Peak Finding
- Auto Resolution Calculation

Tray Options

Standard Collect Trays

- 72 Pos., 25 x 200 mm vials
- 42 Pos., 38 x 200 mm vials
- Boiling Flasks, 250 mL, 24 Pos
- TurboVap Tubes, 200 mL 25 Pos
- Bottles, 125 mL 25 Pos.
- RapidVap Tubes, 500mL, 12 Pos.
- Specialty Trays

Columns

- Traditional Glass
- Express™ Performance
- Envirosep-ABC
- Others available by request

Enhance Your MPS

- AccuVap Inline™
- AccuVap FLX™
- Dioxin/SPE Module

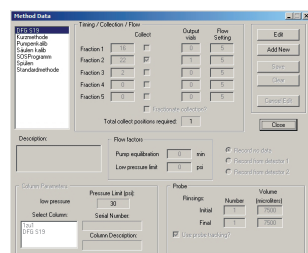


A revolution in GPC Cleanup system design, the AccuPrep MPS™ combines flexibility and cutting-edge features in a smaller package.

- Standard pressure rating of 2500 psig
- Optional on-board Windows-based PC eliminates need for a desktop computer
- Easy integration with SPE, Dioxin and AccuVap *InLine*™ & *FLX*™ modules
- Direct inject, loop-overfill and partial-loop fill available on one platform

The AccuPrep MPS™ for GPC Cleanup performs cleanup of a wide range of sample matrices including foods, tissues, grains, plants and environmental samples such as soil, sludge, and hazardous waste for EPA (SW-846 Method 3640A), CLP, FDA, USDA, USDI analysis, DFG S 19 nach §35 LMBG, L-00.00-34, EN 12393, EN 1528, AOAC Method No. 984.21.

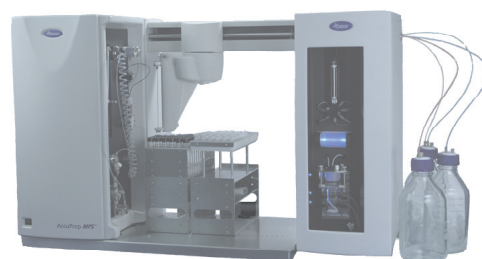
The AccuPrep MPS™ has the core features that previous AccuPrep™ systems have been known for: Solvent Level Sensing warns when solvent is low and pauses operation if the level is not replenished; Probe Tracking feature minimizes probe contact with the sample and increases rinsing efficiency; and Septum Piercing allows the sample and collect vials to be sealed, ensuring the integrity of the sample.



Intuitive method parameters give flexibility and control

Sample Type	No.	Volume	Method	Column	Flow
Sample	1	1000	Standard	1	1
Sample	2	1000	Standard	2	2
Sample	3	1000	Standard	3	3
Sample	4	1000	Standard	4	4
Sample	5	1000	Standard	5	5
Sample	6	1000	Standard	6	6
Sample	7	1000	Standard	7	7
Sample	8	1000	Standard	8	8
Sample	9	1000	Standard	9	9
Sample	10	1000	Standard	10	10
Sample	11	1000	Standard	11	11
Sample	12	1000	Standard	12	12
Sample	13	1000	Standard	13	13
Sample	14	1000	Standard	14	14
Sample	15	1000	Standard	15	15
Sample	16	1000	Standard	16	16
Sample	17	1000	Standard	17	17
Sample	18	1000	Standard	18	18
Sample	19	1000	Standard	19	19
Sample	20	1000	Standard	20	20
Sample	21	1000	Standard	21	21
Sample	22	1000	Standard	22	22
Sample	23	1000	Standard	23	23
Sample	24	1000	Standard	24	24
Sample	25	1000	Standard	25	25
Sample	26	1000	Standard	26	26
Sample	27	1000	Standard	27	27
Sample	28	1000	Standard	28	28
Sample	29	1000	Standard	29	29
Sample	30	1000	Standard	30	30

Spreadsheet Sequence view means quick data entry. Select unique method, injection volume and column for each sample.



For complete automation, add an AccuVap™ Concentration module to the AccuPrep MPS™. Online concentration of GPC collect fractions means one-step cleanup/concentration. Programmable quantitation allows the concentrate to be transferred directly to a GC vial for analysis. Ask for more information.